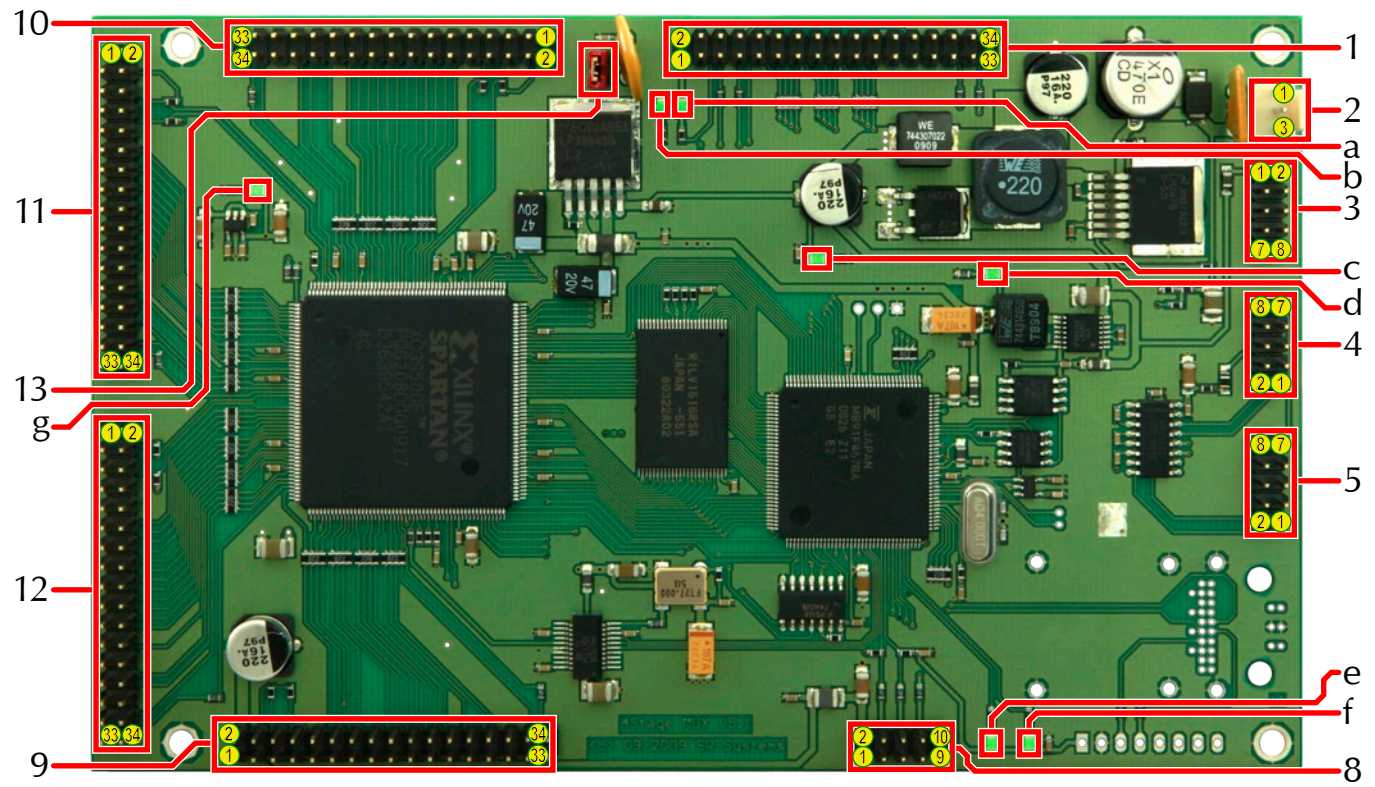


# 1 Board Overview



board dimensions: 100x160 mm

<b>Connectors</b>	1	34pin Header	Transportstream Output
	2	3pin Header	Power Input 9-24 V=
	3	10pin Header	Analog Input
	4	10pin Header	RS232 (COM 2)
	5	10pin Header	RS232 (COM 1)
	8	10pin Header	I <sup>2</sup> C-Bus for Display + Keyunit
	9	34pin Header	Transportstream 1 Input
	10	34pin Header	Transportstream 2 Input
	11	34pin Header	Transportstream 3 Input
	12	34pin Header	Transportstream 4 Input
13	2pin Header	Jumper for +5V power on TS-Out (e.g. for ASI-Out)	

<b>LEDs</b>	a	LED green	optional signal from ext. Boards
	b	LED green	ext. +5 V on
	c	LED green	+5 V ok
	d	LED green	+3,3 V ok
	e	LED green	MCU Status 1
	f	LED green	MCU Status 2
	g	LED green	+2,5 V ok

## 2 Connector description

<b>1 – TS out</b>			
1	+5.0 V	2	+5.0 V
3	+5.0 V	4	+5.0 V
5	SDA	6	reserved
7	SCL	8	not connected
9	GND	10	GND
11	TS CLK	12	TS PSYM
13	TS ENA	14	TS DVAL
15	TS 6	16	TS 7
17	TS 4	18	TS 5
19	TS 2	20	TS 3
21	TS 0	22	TS 1
23	GND	24	GND
25	SD In	26	reserved
27	SDCLK	28	SD Out
29	GND	30	GND
31	not connected	32	<b>do not use!</b>
33	not connected	34	<b>do not use!</b>

<b>2 – Power Input</b>	
1	+9.0 ... +24.0 V
2	GND
3	GND

<b>3 – Analog input</b>			
1	+5.0 V	2	GND
3	optional 3	4	GND
5	optional 2	6	GND
7	optional 1	8	GND
9	Analog In	10	GND

<b>4-5 – RS232 (COM1, COM2)</b>			
1	not connected	2	TxD
3	RxD	4	con. with 6
5	GND	6	con. with 4
7	not connected	8	not connected
9	Reset	10	GND

<b>8 – I<sup>2</sup>C (Display + Keypad)</b>			
1	+5.0 V	2	+5.0 V
3	SDA	4	SDA
5	SCL	6	SCL
7	Reset	8	IRQ
9	GND	10	GND

<b>9-12 – TS In</b>			
1	+5.0 V	2	+5.0 V
3	+5.0 V	4	+5.0 V
5	SDA	6	xError (f. E.*)
7	SCL	8	xReset
9	GND	10	GND
11	TS CLK	12	TS PSYM
13	TS ENA	14	TS DVAL
15	TS 6	16	TS 7
17	TS 4	18	TS 5
19	TS 2	20	TS 3
21	TS 0	22	TS 1
23	GND	24	GND
25	SD Out	26	PLL THR (f. E.*)
27	SDCLK	28	SD In
29	GND	30	GND
31	MCLK 27 MHz	32	ASCLK (f. E.*)
33	RST Vid. Codec	34	not connected

\*f.E. = for Encoders

<b>13 – Jumper</b>	
set – turns on the +5 V power on TS out, e.g. for ASI-Out-Boards	

**Errata/corrections:**

15.10.2009 First release.

The information in this manual was compiled with high care and to our best knowledge; nevertheless there might be some errors left in this document. We do not take legal or any other responsibility for the correctness of any information.

This document is protected by copyright law. All rights including copying, translation, microfilming as well as storage and processing in electronic systems are reserved.

We are happy to receive your comments and questions:

**SR-Systems** Tel.: +49 (66 63) 91 88 66  
 Brüder-Grimm-Straße 130 Fax: +49 (66 63) 91 88 67  
 36396 Steinau eMail: DATV@SR-Systems.de